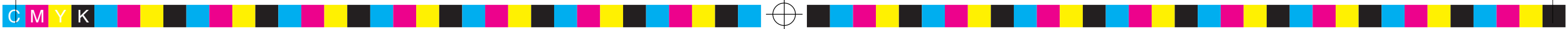
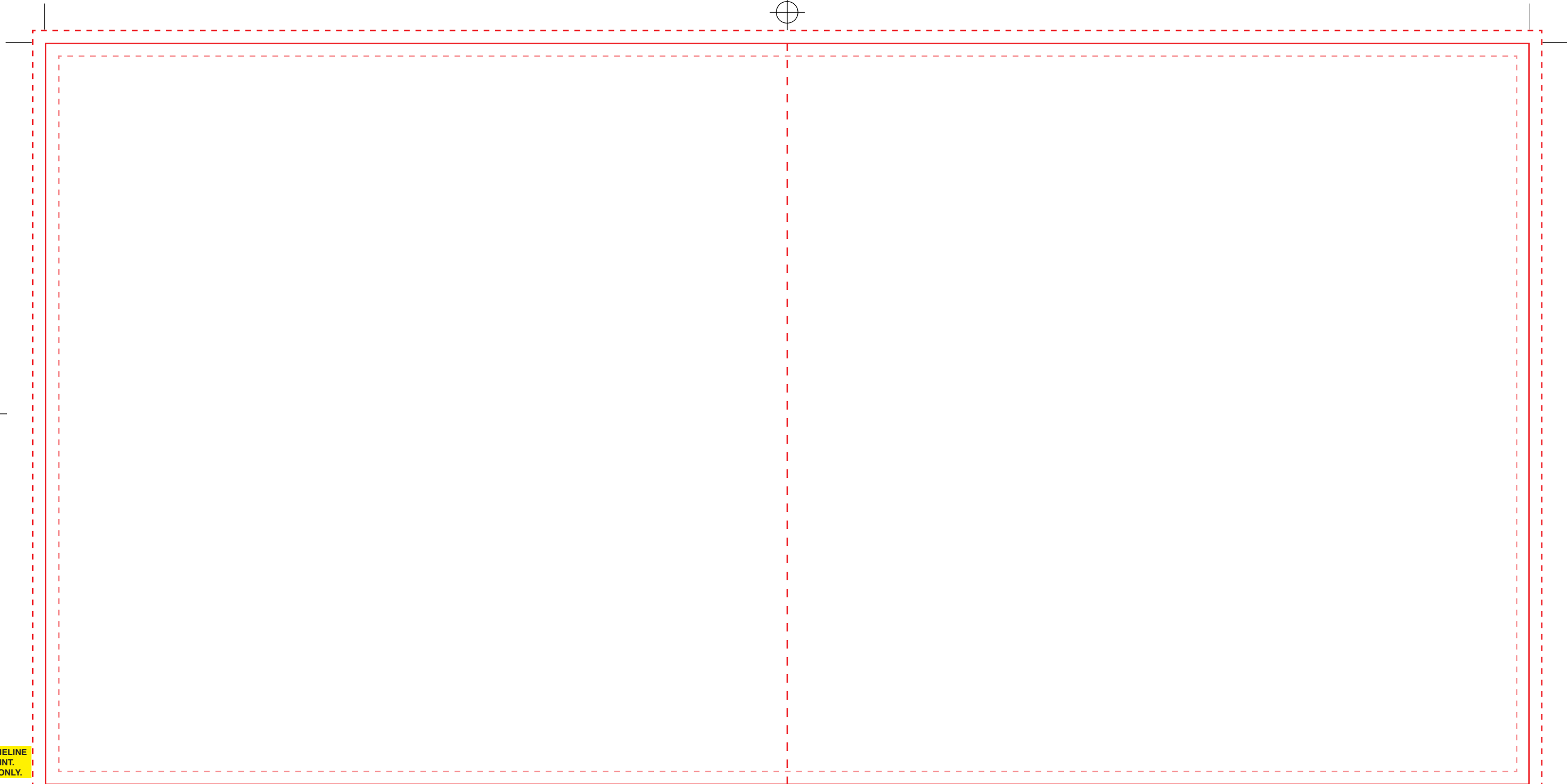
 NOTE: RED DIELINE WILL NOT PRINT. FOR VISUAL ONLY.


Order XXXXX

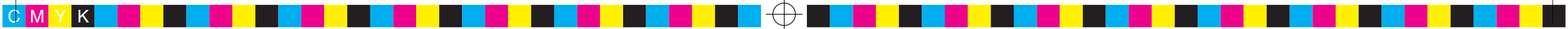


Outer dotted line is bleed, extend all background images to this line.
Middle solid line is cut line, this is where the art will be cut.
Inner dotted line is safety margin, keep all important elements within this line.
Keep "Guides" layer locked, work only on "Art" layer, or new layers you create.

Page 1 is folder outside. Page 2 is folder inside.



 NOTE: RED DIELINE WILL NOT PRINT. FOR VISUAL ONLY.



Outer dotted line is bleed, extend all background images to this line.
Middle solid line is cut line, this is where the art will be cut.
Inner dotted line is safety margin, keep all important elements within this line.
Keep "Guides" layer locked, work only on "Art" layer, or new layers you create.

Page 1 is folder outside. Page 2 is folder inside.